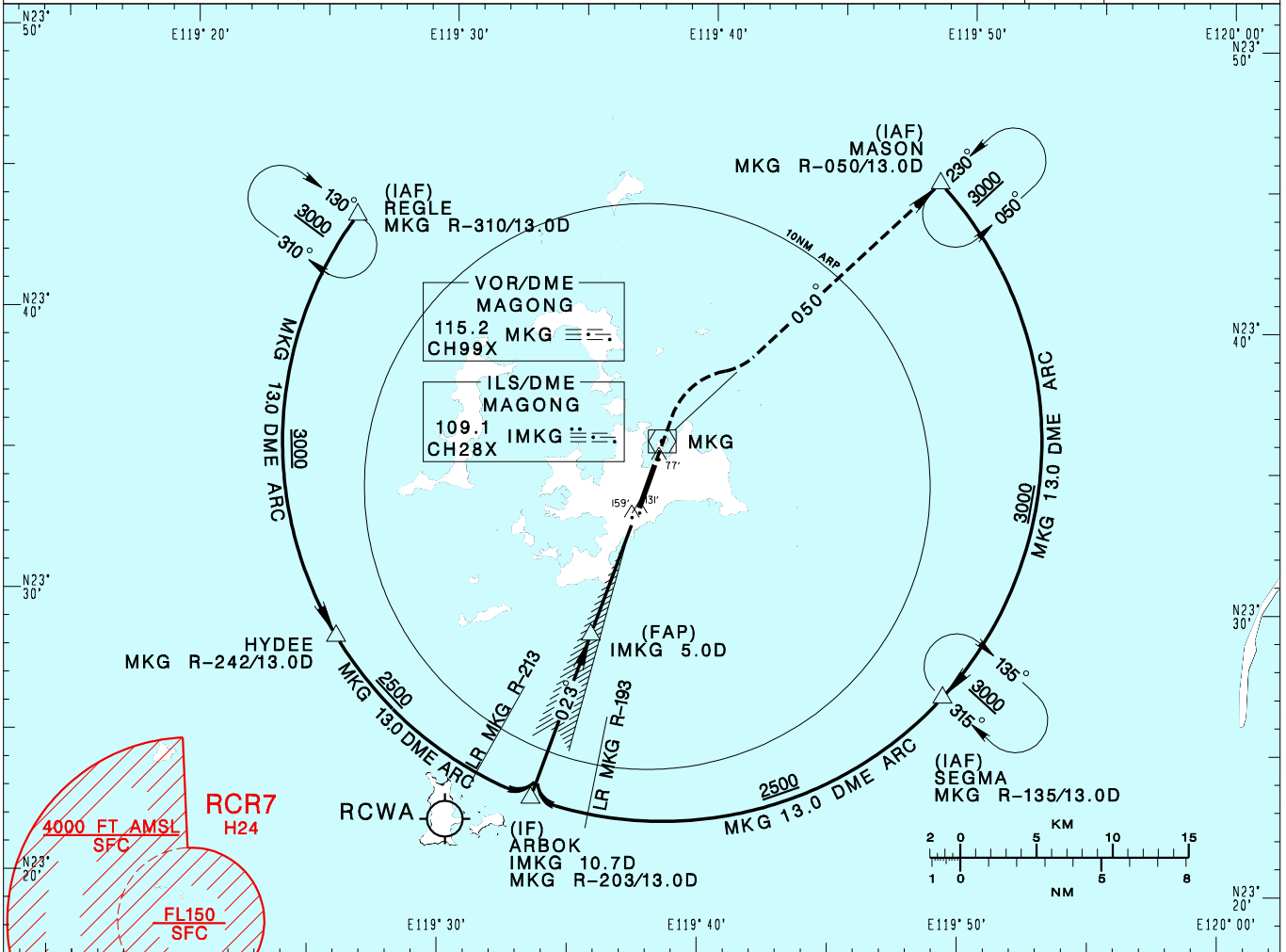


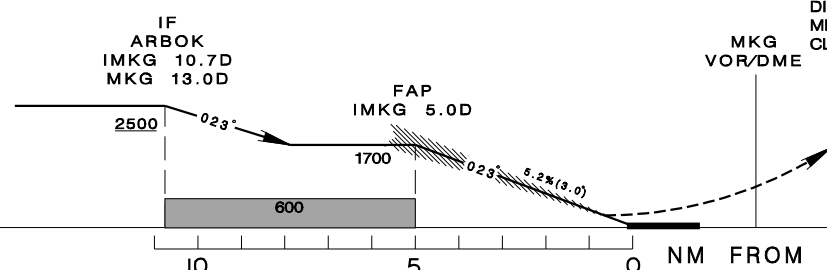
澎湖機場
PENGHU AD

RCQC
ILS RWY02

KAOHSIUNG APP 128.1 234.8	MAGONG TWR 118.3 236.6	ATIS 127.05	 MSA ARP 25NM VAR 4°W-2022		
Apt Elev: 103'		Rwy02 THR Elev: 103'		Trans Level: FL130	Trans Alt: 11,000'
BEARINGS ARE MAGNETIC; DISTANCES ARE NAUTICAL MILES; ELEVATIONS, HEIGHTS IN FEET					



MISSED APCH:
DIRECT TO MKG VOR, TRACK
MKG R-050 TO MASON,
CLIMB TO 3000 AND HOLD.



CHANGES: UPDATE MAG VAR AND TRACK.

MINIMA (OCA IN FT, VIS IN M, OCH IN FT)					NOTE CIVIL AIRCRAFT USE EAST TRAFFIC PATTERN. *DME REQUIRED.
CATEGORY	A	B	C	D	
STRAIGHT IN	330/ 800 RVR750 227	342/ 800 RVR750 239	350/ 800 RVR750 247	360/ 800 RVR750 257	
STRAIGHT IN (ALS OUT)	330/ 1200 RVR1200 227	342/ 1200 RVR1200 239	350/ 1300 RVR1200 247	360/ 1300 RVR1200 257	
CIRCLING	620/1900 517	620/2800 517	710/3700 607	800/4600 697	